

The Duel

TEST DRIVE II™



The Manual for Commodore Cassette



Designer: Distinctive Software, Inc.
Commodore 64/128 version: Kris Hatlelid, Kevin Pickell
Producer: Shelley Day
Tester: Cyndi Kirkpatrick
Art: John Boechler, Theresa Henry
Music: Kris Hatlelid
Manual: Jeff Hoff

Imagine the desert. Flat. Hot. Roads that drill straight ahead into perpetuity. A driver's dream. Now, imagine yourself at the wheel of a silver gem known as the Porsche 959. The world's fastest production car. That's what they told you when you plunked down your quarter-of-a-million dollars, anyway. You're cruising at 200 KPH, feeling very royal, very king-of-the-road.

Nothing in these parts can touch you. Or so you think.

Suddenly, there is a blur in the passing lane.

You blink. Whatever it was had to be going at least 240 KPH. You put your pedal to the metal and investigate. Up ahead, in a perfect red haze of automotive harmony, cruises a machine unlike any you've seen before. Your jaw drops. It's the legendary Ferrari F40 — as sleek a piece of Kevlar and carbon-reinforced plastic as ever rolled off a production line.

You pull even. The other driver looks you over. He raises his thumb ... then roars ahead, finding another 40 or 50 KPH in the bowels of his 478-horse, twin-turbo V-8. You glance at your instrumentation. You've always wanted to explore the depths of that famous Porsche 6th gear. You shift. You rocket, head to head, down the desert chute. You wind up treacherous mountain curves. You hurtle through lush woodland corridors.

And the cops are out in droves.



HOW TO LOAD THE DUEL

Commodore 64/128

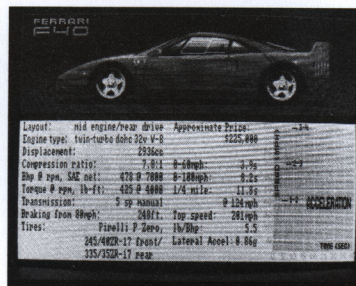
- 1 Connect your joystick to Port 2. Remove any cartridges.
- 2 Turn on your computer and cassette player.
- 3 Insert the *The Duel: Test Drive II* into the cassette player, label side up, and close the door.
- 4 Press and hold the **SHIFT** key, then press the **RUN/STOP** key.
- 5 At the prompt, press the **play button** on the cassette player.

HOW TO SET UP A RACE

Your choices include (and it's good to choose them in this order):

(1) Your Car

- A picture of the current selection is displayed in the Setup screen. To choose other cars, highlight then press the **fire button**.
- After the screen dissolves to the Car Selection screen (like the ones pictured below and on page 2), use your joystick to scroll through the available cars. When your favorite appears, press the **fire button** and the screen dissolves back to the Setup screen.



The Ferrari F40: Anything that can put a quarter-mile behind you in 11.8 seconds should be classified top secret, but here's the specs. Everything except what the pit of your stomach feels like, cornering at 200 KPH. (Hint: It has been described as "the Ferrari shriek.")

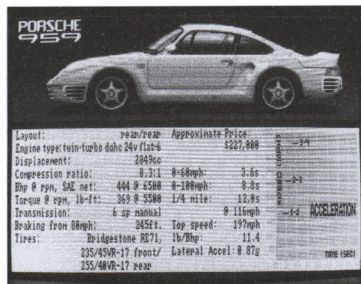
The Duel



HOW TO SET UP A RACE (Continued)

(2) The Other Car

- This displays your competition if you elect to race the computer. Highlight, press the **fire button** and the screen dissolves to the Car Selection screen. Choose the computer's weapon and press the fire button to return to Setup.



The Porsche 959: Is it truly the production zenith of modern automotive engineering? Get it up to 240 kph on a straight stretch of road. Then try to figure out if that's a shimmy you feel — or just the racing of your insane, babbling heart. (Hint: Porsches don't shimmy. Ever.)

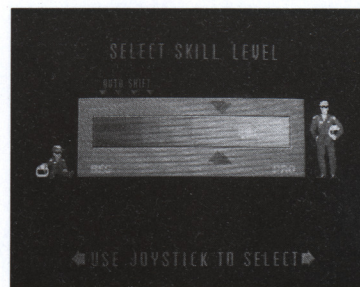
(3) Do you want to race against the clock?

- Highlight the stopwatch, press the **fire button** and you're off to the Skill Selection screen.

(4) Or battle the relentless, icy cool driving hand of the computer?

- Highlight the computer, press the **fire button** and you go to the Skill screen.

CHOOSE YOUR SKILL LEVEL



The Skill screen: After choosing your car and competition, it's time to honestly assess your talent. From wimp to stud.

There are 12 levels of difficulty. Here's a quick breakdown of the range for the different variables:

Skill level	1	2	3	4	5	6	7	8	9	10	11	12
Auto shift	x	x	x	x								
Opponent speed	90 MPH	_____								Up to Max Speed		
Cop speed	120 MPH	_____								200 MPH		
Traffic density	50%	_____								100%		
Traffic speed	30 MPH	_____								60 MPH		
Scoring	33%	_____								100%		

- Move your joystick left or right to choose a level, then press the **fire button**.

CHOOSE YOUR SCENERY

- At the prompt, if you will be using the scenery that comes with The Duel, remove the cassette, flip it to side B and insert it into the cassette player. Rewind to beginning of the tape, press **play**, then press the **fire button**.

If you will be using the California Challenge scenery cassette, remove The Duel, insert California Challenge, press **play**, then press the **fire button**.

The Duel

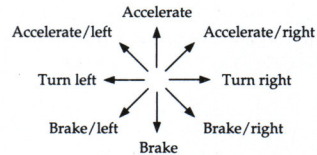


Need a Change of Scenery?

The Duel comes with a richly-varied roadscape, but another Scenery Disk – *California Challenge™* with seven additional roads – is available. To find out more, visit your favorite software store.

Advertisement Advertisement Advertisement

HOW TO DRIVE YOUR CAR



To shift your car with these controls, accelerate or decelerate until you're ready to change gears, then simultaneously press the **fire button**.

ADDITIONAL CONTROLS



Makes the Gear Shift appear and disappear on screen



Pauses the action – press any key to continue



Toggles music off and on



Toggles game sounds off and on



Takes you to the Setup screen

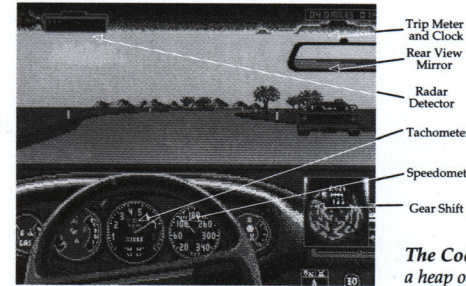
SAVE

There is no way to save a race.



Fast mode – The game drives faster, but you lose some resolution/detail. Toggles on and off.

THE COCKPIT



The Cockpit: everything you need to get into a heap of trouble.

Tachometer

Large gauge in center of dashboard. Registers in thousands of revolutions per minute (RPMs) of your drive shaft. The bigger the number, the harder your engine is working. If you work it too hard, or “red line” — that is, push the tach needle into the red area — you’ll blow all your precious horsepower right out the tailpipe.

Steering Wheel

The joystick turns the wheel left or right. The dot on the top moves to show you how far off of straight you are.

Radar Detector

Located on sun visor in upper left of windshield. A blinking light means it's on. If the light flashes and beeps, slow to the speed limit, because lurking nearby is your worst nightmare: A state trooper with (1) an attitude and (2) a shortfall on his weekly ticket quota.

Of course, you could try to outrun the toast. But you better be good.

Police

A cop will chase you until you either outrun him or he passes you. In the latter case, you must stop and get a ticket. (Getting a ticket is not a good thing. Not only do your insurance rates go up, but the clock is still running and you lose valuable time.) If you crash into a cop, the game is over. That's justice.

The Duel



Speedometer

Near the middle of the dashboard. You can't miss it. Your speed is measured in KPH (kilometers per hour).

Trip Meter and Clock

Critical info. The meter goes down, telling you the distance left in the leg. The clock goes up, tracking how long it takes you to negotiate the leg.

Gear Shift

To make it appear and disappear from the screen, press **D**. If the display is off, the gear shift appears only briefly when you shift.

Rear View Mirror

Monitor it well. Especially at higher levels, watch out for your zealous highway idiot of an opponent. A keen eye to the glass will help you keep on top of ol' Smokey too.

TAKE A TRIP

Lives. You start with five, which is less than a cat gets, but still pretty generous. You lose a life every time you crash or get a penalty. But you gain one each time you refuel.

Penalties. You lose a life and get 20-second penalties (added to your time) if you crash, blow an engine or run out of gas.

Gas. Elixir of the road gods. When you see a sign like the one in Diagram 19.5, start thinking about filling up. When the two white lines pop up beside the gas station (like the ones in Diagram 42.76), stand on the brake and pull onto your side of the road. If you don't stop between the lines, you can't refuel. That's not good — and you'll find out why in a few miles.

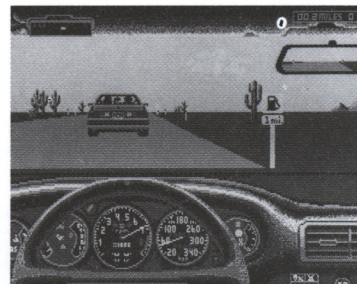


Diagram 19.5: Your car may begin to pant when it spots the universal symbol for petrol.

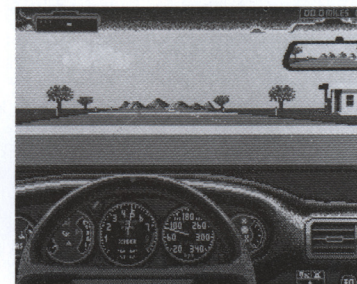


Diagram 42.76: A guy named Vern owns this station which he calls "Eat Here and Get Gas."

Go. Rev the engine, fool. You are now in gear. If you're on a manual shift level, pop it into gear and go.

Shift. To shift up, hit the fire button while holding the joystick up. To shift down, hit the **fire button** and while holding the joystick down.

Resurrections. After each crash or penalty, press the **fire button** to continue the duel. If you run out of lives ... well, cheer up, even Rome fell. Don't quit. Ignore the callous insults flung at you by the computer and take another shot.

The Duel

SCORE SCREENS

One or two score screens that resemble Z1 and Z2 will appear after each leg of the race is finished.

```
Come on! Use that lead foot of yours.

Section 1 2.7 miles
Your time: 1:16.6 + 0:40 penalty
Your avg speed: 82 mph
Your score: 6580 points
Best time: 1:56.6
Best avg speed: 82 mph
Best score: 6580 points

Overall Performance
Your time: 1:56.6
Your score: 6580 points
Best time: 1:56.6
Best score: 6580 points

Press key or joystick to continue...
```

Z1

```
You won this round!!!
You are winning the game!!!

Section 1 2.7 miles
Your time: 1:16.6 + 0:40 penalty
Your avg speed: 82 mph
Your score: 6580 points
Other's time: 5:54.2 + 2:00 penalty
Average speed: 20 mph
Other's score: 154 points

Overall Performance
Your time: 1:56.6
Your score: 6580 points
Other's time: 7:54.2
Other's score: 154 points

Press key or joystick to continue...
```

Z2

The stopwatch never lies: When you race alone, a screen like Z1 appears to reward or scold. Three stats are featured – Best Time, Ave. Speed, and Total Points. The best of your current playing session will be recorded. They are kept independently and may not come from the same run. When you race against the computer, the screens appear sequentially – Z2 first. You start with a clean score screen each time you power up your computer.

The Duel



ACCOLADE CUSTOMER SERVICE IN ENGLAND: 44-1-585-3308

If you need help with this — or any other — Accolade product, please give us a call. Be sure you are at your computer when you call. We'll do everything we can to solve your problem or answer your question. Or write to us at:

Accolade Europe Ltd.
Attn: Customer Service
50 Lombard Road
London SW11 35V
England



YOUR DISK CARRIES A 90-DAY WARRANTY

Accolade, Inc. warrants for a period of 90 days from the date of purchase by the original purchaser of the Software that the recording medium on which it is recorded will be free from defects in materials and workmanship. Defective media which has not been subjected to misuse, excessive wear or damage due to carelessness may be returned during the 90-day period without charge.



LICENSE AGREEMENT and LEGAL MUMBO JUMBO

This computer software product (the "Software") and the user manual are provided to the Customer under license from Accolade, Inc. and are subject to the following terms and conditions, to which the Customer agrees by opening the package of the Software and user manual and/or using the Software. Granting of this license does not transfer any right, title or interest in the Software or the user manual to the Customer except as expressly set forth in this License Agreement.

The software and the user manual are copyrighted 1988 by Accolade, Inc. All rights are reserved. Neither the Software nor the user manual may be duplicated or copied for any reason. The customer may not transfer or resell the Software or user manual. All registered trademarks and names are properties of their respective owners.

The remedies provided above are the Customer's sole and exclusive remedies. In no event shall Accolade, Inc. be liable for any direct, indirect, special, incidental or consequential damages with respect to the Software or the user manual. Except as provided above, Accolade, Inc. makes no warranties, either express or implied, with respect to the Software or the user manual, and expressly disclaims all implied warranties, including, without limitation, the warranty of merchantability and of fitness for a particular purpose.

05103
7/89

ACCOLADE™ Software Warranty Registration

MONTHLY DRAWING FOR A FREE ACCOLADE SOFTWARE PRODUCT

To be eligible for our monthly drawing and product warranty, please answer all questions and mail within 10 days of purchase (one registration per purchase, no facsimile accepted). This card qualifies for one monthly drawing. Winner will be contacted within 30 days of drawing and will receive product of their choice. See enclosed manual for warranty details.

Name _____ Phone () _____

Address _____ Male _____ Female _____

City _____ County _____ Postal Code _____

Warranty information for: The Duel: Test Drive II/Commodore 64 Cassette

Circle disk size of this product: 3 3 1/2" 3" 5 1/4" cassette

Circle computer(s) you own: Apple II Atari 800 Atari ST Macintosh Amiga Apple IIGS C64/128
 IBM PC or Compatibles Tandy

If you own an IBM, circle graphics adapter: CGA EGA VGA MCGA Mono Other _____

Age of buyer:

Age of player:

Where purchased:

Decided to buy because:

___ under 13

___ under 13

___ Computer Hardware/Electronic Store

___ Friend

___ 13-19

___ 13-19

___ Computer Software Only Store

___ Magazine Article/Review

___ 20-29

___ 20-29

___ Record Store

___ Magazine Ad

___ 30-39

___ 30-39

___ Book Store

___ Packaging

___ 40-50

___ 40-50

___ Toy Store

___ Sales Person

___ over 50

___ over 50

___ Department Store

___ Other

___ Mail Order

What computing magazine do you read? _____

Have you filed a warranty card for a previous Accolade purchase? Yes No

What type of games do you buy the most? ___ Graphic Adventure ___ Action/Arcade ___ Fantasy role playing
 ___ Simulation ___ Sports ___ Other _____

How would you rate this product? 1 (lowest) 2 3 4 5 (highest) 6/89

PLACE
STAMP
HERE

WARRANTY REGISTRATION
& FREE DRAWING ENTRY

Accolade Europe Limited
Attn: Customer Service
50 Lombard Road
London SW11 3SU, England